



Membership: As of July 1st we will be starting a new year at MDPAG. You can renew your membership at the meetings or mail in your [membership form](#) and payment. In order to take out books and DVDs at the summer meetings, you will have to be a paid member by the July 16th meeting.

Education: On Saturday, June 27th Lynda Gilcher will be teaching constructing canes and building bowls. On Sunday, June 28th Kathy Bingaman will be teaching making sea creatures using polymer clay and found objects. If you would like to attend, please send in your [registration form](#) and payment to Susan Kaplan by Friday, June 13th.

Library: Scott Raft has volunteered to be our new Librarian. Thank you, Scott!

Retreat: Mark your calendar! The 2016 Retreat will be held on April 7-10 at Colombiere Center in Clarkston, MI.

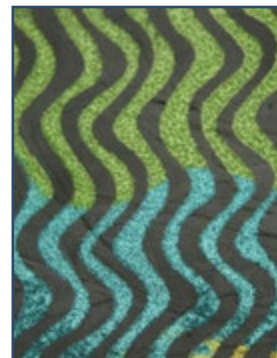
Website: Send jpgs of your work or from Retreat to Webmaster Linda Vilas-Helton.



Bottles of Hope created at Retreat.

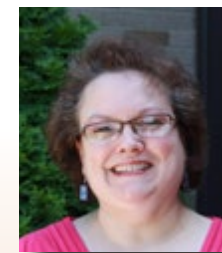


At the May meeting MDPAG members enjoyed time together, voting for Executive Board positions and watching Kathy Weinberg's silk screen demo.



Photos by Charmaine Lipa

Linda's Corner



The Last One

So here it is, my last column as President. As I look back over the columns I have written I see a common theme in most of them - how do you grow as an artist?

Issues like finding inspiration, organizing your thoughts (and your clay and work area), exploring color, trying new techniques, and taking classes to improve your skills. These are issues that are important to me as I continue to learn and grow, and some of the reasons I joined our guild.

Another common theme in my columns: support our outreach programs - Bottles of Hope, Beads of Courage, and Hearts for Heroes. In a way, this theme actually ties in with the first theme. We have all heard the adage "practice makes perfect". What better way to practice our craft than to create art for our outreach programs. So many of our members have been so generous, but I would have to sour

(Continued on Page 3)

Mask Swap Details:

- Masks will be no larger than 2" x 2" x 1/4" thick.
- One mask will be made for each person who participates - 18 people. Consider making an extra mask or two for charity projects.
- Please sign or initial your masks.
- Your name must be included with each mask. Masks need to be in individual baggies and all in a box or large Ziploc bag.
- Masks don't all need to be the same so feel free to try out different designs or techniques.
- Long distance members can mail theirs in (with money to cover return mailing) and their box will be mailed out by the Swap Meister.
- Masks are to be turned or mailed in by the June meeting and will be returned by the July meeting.

Participants:

Denise Osborne	Jean Comport
Charmaine Lipa	Linda Vilas-Helton
Sue Screws	Suzane Stiles
Linda Yott	Kathryn Savickas
Helen Pope	Phyllis Crawley
Jan Burgess	Anita Buckowing
Chris Corliss	Sue Kelsey
Susan Kaplan	Dorothy Greynolds
Kathie Harroun	Diane Ferguson

Upcoming Events:

Thursday, June 18th: Membership Meeting: 7 - 9 pm

Installation of Officers: Installation of Board Members for the 2015-2016 year will be held.

Pot Luck: Chicken (baked and fried) will be provided by MDPAG. Please bring the item you signed up for at the May meeting or on the "Members Only" Yahoo Group. If you haven't signed up and plan to attend the meeting, any item (especially gluten free or vegetarian) is appreciated. Thank you!

Mask Swap: If you signed up to participate in the swap, please bring your masks to the meeting. Thanks! If you have any questions, please contact Denise Osborne or Dorothy Greynolds. Please consider making an extra mask or two to be used on mirrors/frames for Gilda's Club.

Membership: If you haven't paid your dues, plan on doing so at a meeting or mailing your dues and membership form to Membership Chair Denise Osborne. Thanks!

Thursday, July 16th: Membership Meeting: 7 - 9pm

Make & Take Project: Bring scrap clay, canes or decorative sheets to cover the scrap clay, work surface, roller, shaping tools, metal spoon for smoothing surface and blades to the meeting.

Mask Swap: Masks will be returned to all swap participants.

Thursday, August 20th: Membership Meeting: 7 - 9pm

Creating Work for Gilda's Club: Bring in cured work that could be used to create mirrors or frames for Gilda's Club. If you have items that you have made (that don't have to be polymer clay), please consider bringing them in to donate for their upcoming Alternative Christmas Fair booth. Thanks!

All Meetings:

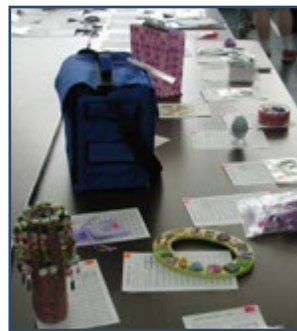
Donations: Contributions to our "Beads of Courage," "Bottles of Hope" and "Hearts for Heroes" outreach charity programs are always appreciated.

Library: Librarian Scott Raft will be bringing the library materials to the meeting. Make sure you have paid your 2015-2016 dues so you can check out items. If you have a suggestion for books and dvds that would be good for MDPAG to consider purchasing, let Scott Raft know. Thanks!

Member Ideas: We are always interested in your ideas for upcoming meeting demos, swaps, make & take projects and other topics. Share them at a meeting or send your ideas to Vice President Chirs Corliss.

Show and Tell: Bring in work you have recently created to show fellow MDPAG members at the Show & Tell table.

Retreat 2015 pictures



Linda's Corner (Continued from Page 1)

most shining example of this is our incoming president Denise Osborne.

The third most common theme that I wrote about was -- service to our guild. Many hands lighten the load, and I would have to say I honestly think I got more than I gave from this experience. We really need to see some new faces and hear some new ideas. Every members' thoughts and ideas are important to help our guild improve and grow.

I hand over the reins to our new President, and I am excited about our future.

Thank you for all your support,

Linda Vilas-Helton

Retreat Sponsors

If you could take time to like these donors on Facebook or thank them online, it would be appreciated. Thanks!

Amaco: <http://www.amaco.com>

Linda Boyle:

<http://www.gingerbreadcutterco.com>

Penni Jo Couch:

<http://www.bestflexiblemolds.com/>

Christi Friesen:

<http://www.christifriesen.com>

Craftcast with Alison Lee:

<https://www.craftcast.com>

Cristy Dickerson

Deb Hart: <http://debhart.weebly.com>

Lindly Haunani:

<http://www.lindlyhaunani.com/>

(Continued on Back Page)

Photos by Charmaine Lipa and Kathy Weinberg

Upcoming Events:

Thursday, June 18 • 7-9pm

- Pot Luck
- Installation of Officers
- Masks due for Swap

Thursday, July 16 • 7-9pm

Make & Take Project

- Masks returned to swap participants

Thursday, August 20 • 7-9pm

- Donation project for Gilda's Club
- Bring in donations for Gilda's Club for their fundraising event

All meetings:

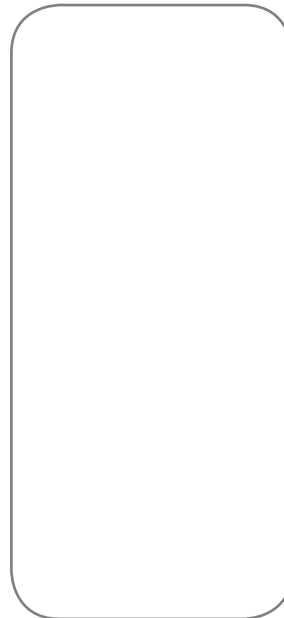
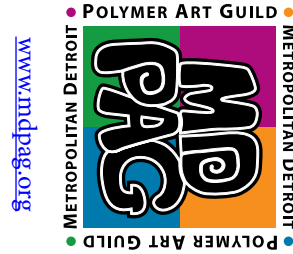
- Show & Tell • Library
- Donations to outreach charities

More Info on Page 2



Meetings are held on the third Thursday of the month, excluding Dec., Jan. and Feb.

All meetings take place at 7-9pm
Royal Oak Senior Center, 3500 Marais



Dorothy Greynolds
5678 Eldridge Drive
Waterford MI 48327

Retreat Sponsors

(Continued from Page 3)

Donna Kato:

<http://www.craftartedu.com>

Layl McDill: Clay Squared (Silly Mil-lies): <http://www.claysquared.com>

Libby Mills: <http://libzoid.net>

Lisa Pavelka:

<http://store.lisapavelka.com/>

Polyform (Iris Weiss):

<http://www.sculpey.com>

Helen Pope

Stachia Schwarz

Carole Smithers

Softflex Company:

<http://www.softflexcompany.com>

Staedtler: <http://www.staedtler.us/en/products/products-for-modelling-and-crafting/>

Alice Stroppel:

<http://polymerclayetc.com/>

Tonja's Treasures: <https://www.etsy.com/shop/tonjastreasures>

Linda Yott

Claire Maunsell

Also, a special thank you to our guild members for their silent auction donations:

Carolyn Allen, Kathy Bingaman, Jan Burgess, Jean Comport, Chris Corliss, Phyllis Crawley, Diane Ferguson, Dorothy Greynolds, Kathie Harroun, Susan Kaplan, Charmaine Lipa, Helen Pope, Cristy Rice, Lynda Struble, Sue Screws, Linda Vilas-Helton and Kathy Weaver.